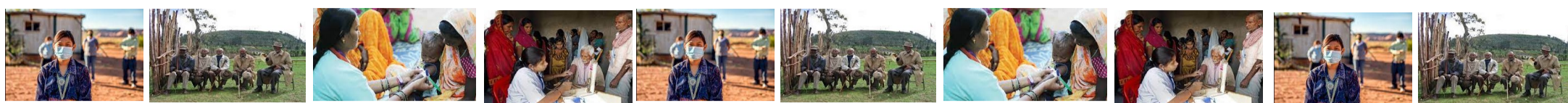




*Advancing global health in Africa and beyond*



## GLOBAL HEALTH WEBINAR SERIES

Professor Taryn Young, Executive Head, Department of Global Health, Stellenbosch University, cordially invites you to a webinar on

### ACHIEVING EQUITY IN HEALTH WORKFORCE DISTRIBUTION – A PIPE DREAM?

1 CPD  
point in  
Level 1

11th November 2021, Thursday | 3:00 pm to 4:30 pm SAST *(via MS Teams)*

#### MODERATOR

Professor Ian Couper,  
Director, Ukwanda Centre for Rural Health, Department of Global Health, FMHS,  
Stellenbosch University

#### SPEAKERS

Ms Theadora Koller



Senior Technical Advisor (Equity),  
WHO

*Addressing equity in  
rural health care*

Dr Michelle Mclsaac



Economist,  
Health Workforce Department,  
WHO

*The WHO guideline on  
health workforce  
development, attraction,  
recruitment and retention  
in rural and remote areas*

Ms Karessa Govender



Project Officer,  
Rural Health Advocacy  
Project

*Achieving health  
workforce equity in  
South Africa – a rural  
perspective*

Dr Maggie Ravhengani



Director: Human Resource  
Stakeholder Relations &  
Management, NDoH

*Progress in South Africa  
in relation to equity in  
health workforce  
distribution*

#### *About the Speakers:*

Ms Theadora Koller represents World Health Organization in the UN "Inequalities Task Team" and interagency platforms for eradicating rural poverty, and leads WHO work on assessing barriers to health services, including in rural areas.

Ms Michelle Mclsaac is an Economist at the World Health Organization. She conducts research in health and labor economics, including the labor market for health care workers in developing and developed countries .

Ms Karessa Govender is Project Officer, Rural Health Advocacy Project, working across multiple programmes with an emphasis on Human Resources for Health, the Rural Learning Sites and the Voice Project.

Dr Maggie Ravhengani is Director, Human Resource Stakeholder Relations & Management with the NDoH. She aims to ensure that clinicians render quality service to the people and work with integrity and are available in right numbers and with right skills.

**To join the webinar please follow the link:**

[https://teams.microsoft.com/l/meetup-join/19%3ameeting\\_YWQ3YmJhM2MtYmlwMy00ZWUxLWFkMTtNjhhMmZjNWFhMWJj%40thread.v2/0?context=%7b%22id%22%3a%22a6fa3b03-0a3c-4258-8433-a120dffcd348%22%2c%22oid%22%3a%22a6888e81-48cf-4c09-9711-64f1a607d814%22%7d](https://teams.microsoft.com/l/meetup-join/19%3ameeting_YWQ3YmJhM2MtYmlwMy00ZWUxLWFkMTtNjhhMmZjNWFhMWJj%40thread.v2/0?context=%7b%22id%22%3a%22a6fa3b03-0a3c-4258-8433-a120dffcd348%22%2c%22oid%22%3a%22a6888e81-48cf-4c09-9711-64f1a607d814%22%7d)

**To know more about the Short Course 'Introduction to Global Health' [click here](#)**